



KONICA MINOLTA



Intuitive operability



Mobile connectivity



Security



Application ecosystem



Productivity



Services

bizhub C759

Colour A3 multifunctional · Up to 75 pages per minute



Giving Shape to Ideas

Customer benefits



Intuitive operability
Operate the bizhub like a smartphone or tablet with fully customised user interface



Mobile connectivity
Print anytime from anywhere with Konica Minolta's innovative mobile technologies



Security
Secure network integration, data encryption, HDD overwrite, and advanced user authentication



Application ecosystem
Enhanced efficiency thanks to Konica Minolta's extensive applications portfolio



Productivity
Reliability, high-speed scanning and printing, combined with powerful finishing functions



Services
Efficient printer fleet management, including automatic consumables delivery, pro-active maintenance and remote setup

Options

1 ENHANCED FEATURES

- PDF enhancements
LK-102v3
- OCR text recognition
LK-105v4
- Barcode fonts
LK-106
- Unicode fonts
LK-107
- OCR A and B fonts
LK-108
- Document converter pack
LK-110v2
- ThinPrint® client
LK-111
- Serverless pull printing
LK-114
- Trusted Platform Module activation
LK-115v2

2 CONNECTIVITY

- Fax board
FK-516 x2
- Wireless LAN
SX-BR-4600 OR
- Wireless LAN
UK-215 OR
- Biometric authentication
AU-102
- ID card reader
- Mount kit
MK-735
- USB I/F kit
EK-610 OR
- USB I/F kit
EK-611 OR
- Keyboard holder
KH-102
- Interface kit
VI-510
- Fiery controller
IC-418

LEGEND

- Mandatory option
- Option
- This option can only be installed with the respective option above it

3 OTHERS

- Double feed detection kit
UK-501
- Security kit
SC-508 (2x required)
- Hard disk mirroring
HD-524
- Working table for upright panel
WT-513 OR
- Working table
LU-506
- 10-Key pad
KP-101

4 MEDIA INPUT

- Large capacity tray
LU-303 OR
- Large capacity tray
LU-205 OR
- Banner tray
BT-C1e

5 MEDIA OUTPUT

- Output tray
OT-508 OR
- Staple finisher
FS-536 OR
- Relay unit
RU-515 OR
- Staple/booklet finisher
FS-536SD OR
- Relay unit
RU-515 OR
- Punch kit
PK-520 OR
- Staple finisher
FS-537 OR
- Relay unit
RU-515 OR
- Staple/booklet finisher
FS-537SD OR
- Relay unit
RU-515 OR
- Z-Fold unit
ZU-609 OR
- Punch kit
PK-523 OR
- Job separator
JS-602 OR
- Post inserter
PI-507 OR



Finishing functionalities



Corner stapling



Two-point stapling



Two-hole punching



Four-hole punching



Duplex



Combined mixplex/mixmedia



Half-fold



Sheet insertion, report



Letter-fold



Booklet



Offset sorting



Z-fold



Banner printing

Descriptions

bizhub C759

A3 multifunctional with 75 ppm b/w and and 65 ppm colour. Standard Emperon™ print controller with PCL 6, PCL 5, PostScript 3, PDF 1.7, XPS and OOXML support. Paper capacity of 500 + 500 + 1000 + 1500 sheets and 150-sheet manual bypass. Media from A6 to SRA3, 1.2 m banner and 52 – 300 g/m². 4 GB memory, 250 GB hard disk and Gigabit Ethernet standard.

ENHANCED FEATURES

LK-102v3 PDF enhancements	PDF/A (1b); PDF encryption; digital signature
LK-105v4 OCR text recognition	Searchable PDF and PPTX
LK-106 Barcode fonts	Supports native barcode printing
LK-107 Unicode fonts	Supports native Unicode printing
LK-108 OCR A and B fonts	Supports native OCR A and B font printing
LK-110v2 Document converter pack	Generates various file formats incl. DOCX; XLSX and PDF/A
LK-111 ThinPrint® Client	Print data compression for reduced network impact
LK-114 Serverless pull printing	Secure and Follow Me printing solution requiring no server application
LK-115v2 TPM activation	Trusted Platform Module for protection of data encryption and decryption

CONNECTIVITY

FK-516 Fax board	Super G3 fax; digital fax functionality
SX-BR-4600 Wireless LAN	Wireless LAN to network connector
AU-102 Biometric authentication	Finger vein scanner
UK-215 Wireless LAN	Wireless LAN and wireless LAN Access Point Mode
ID card reader	Various ID card technologies
MK-735 Mount kit	Installation kit for ID card reader
EK-610 USB I/F kit	USB keyboard connection
EK-611 USB I/F kit	USB keyboard connection; Bluetooth
KH-102 Keyboard holder	To place USB keyboard
VI-510 Interface kit for IC-418	Fiery controller interface card
IC-418 Fiery controller	Professional colour print controller

Technical specifications

SYSTEM SPECIFICATIONS

Panel size/resolution	10.1" / 1024 x 600
System memory (standard/max)	4,096 MB
System hard disk	250 GB (standard)
Interface	10/100/1,000-Base-T Ethernet; USB 2.0; Wi-Fi 802.11b/g/n (optional)
Network protocols	TCP/IP (IPv4 / IPv6); SMB; LPD; IPP; SNMP; HTTP
Automatic document feeder	Up to 300 originals; A6–A3; 35–210 g/m ² ; Dualscan ADF
Printable paper size	A6–SRA3; customised paper sizes; banner paper max. 1,200 x 297 mm
Printable paper weight	52–300 g/m ²
Paper input capacity (standard/max)	3,650 sheets/6,650 sheets
Paper tray input (standard)	1 x 500 sheets; A5–SRA3; custom sizes; 52–256 g/m ² 1 x 500 sheets; A5–SRA3; custom sizes; 52–256 g/m ² 1 x 1,000 sheets; A5–A4; 52–256 g/m ² 1 x 1,500 sheets; A5–A4; 52–256 g/m ²
Large capacity tray (optional)	1 x 3,000 sheets; A4; 52–256 g/m ² ; 1 x 2,500 sheets; A4–SRA3; 52–256 g/m ²
Manual bypass	150 sheets; A6–SRA3; custom sizes; banner; 52–300 g/m ²
Automatic duplexing	A6 portrait; A5–SRA3; 52–256 g/m ²
Finishing modes (optional)	Offset; group; sort; staple; punch; post insertion; z-fold; half-fold; letter fold; booklet
Output capacity (standard)	Max. 250 sheets
Output capacity (optional)	Max. 3,300 sheets
Stapling	Max. 100 sheets or 94 sheets + 2 cover sheets (up to 209 g/m ²)
Stapling output capacity	Max. 1,000 sheets
Letter fold	Max. 3 sheets
Letter fold capacity	Max. 30 sheets; unlimited (without tray)

OTHERS

WT-513 Working table	Working table for upright panel
WT-506 Working table	Authentication device placement
KP-101 10-Key pad	For use instead of touchscreen
UK-501 Double feed detection kit	Multi-feed detector to reduce errors and paper jams
SC-508 Security kit	Copy guard function (2 kits required)
HD-524 Hard disk mirroring	Back-up HDD

MEDIA INPUT

LU-303 Large capacity tray	A4; 3,000 sheets; 52–256 g/m ²
LU-205 Large capacity tray	A4–SRA3; 2,500 sheets; 52–256 g/m ²
BT-C1e Banner tray	Multi-page banner feeding

MEDIA OUTPUT

OT-508 Output tray	Output tray used instead of finisher
RU-515 Relay unit	For FS-536(SD)/FS-537(SD) installation
FS-536 Staple finisher	50-sheet stapling; 3,200 sheets max. output
FS-536SD Booklet finisher	50-sheets staple finisher; 20-sheets booklet finisher; 2,200 sheets max. output
PK-520 Punch kit for FS-536(SD)	2/4 hole punching; autoswitching
FS-537 Staple finisher	100 sheets stapling; 3,200 sheets max. output
FS-537SD Booklet finisher	Booklet finisher 100-sheets staple finisher; 20-sheets booklet finisher; 2,700 sheets max. output
ZU-609 Z-fold unit for FS-537(SD)	Z-fold for A3 prints
PK-523 Punch kit for FS-537(SD)	2/4 hole punching; autoswitching
JS-602 Job separator for FS-537(SD)	Separation of fax output; etc.
PI-507 Post inserter for FS-537(SD)	Cover insertion; post finishing

Booklet	Max. 20 sheets or 19 sheets + 1 cover sheet (up to 209 g/m ²)
Booklet output capacity	Max. 100 booklets; unlimited (without tray)
Copy/print volume (monthly)	Rec. 80,000 pages; Max: 300,000 pages
Toner lifetime	Black up to 48,900 pages; CMY up to 33,200 pages
Imaging unit lifetime	Black up to 300,000/1,200,000 pages (drum/developer); CMY up to 200,000 pages (imaging unit)
Power consumption	220–240 V / 50/60 Hz; Less than 2,1 kW
System dimension (W x D x H)	670 x 938 x 1232 mm (with desk/tray)
System weight	Approx. 219 kg (without options)

PRINTER SPECIFICATIONS

Print resolution	1,800 (equivalent) x 600 dpi; 1,200 x 1,200 dpi
Page description language	PCL 6 (XL 3.0); PCL 5; PostScript 3 (CPSI 3016); XPS
Operating systems	Windows 7 (32/64); Windows 8/8.1 (32/64); Windows 10 (32/64); Windows Server 2008 (32/64); Windows Server 2008 R2; Windows Server 2012; Windows Server 2012 R2; Windows Server 2016; Macintosh OS X 10.8 or later; Unix; Linux; Citrix
Printer fonts	80 PCL Latin; 137 PostScript 3 Emulation Latin
Print functions	Direct print of PCL, PS, TIFF, XPS, PDF (v1.7), encrypted PDF files and OOXML (DOCX, XLSX, PPTX); mixmedia and mixplex; "Easy Set" job programming; overlay; watermark; copy protection; carbon copy print
Mobile printing	AirPrint (iOS), Mopria (Android), Konica Minolta Print Service (Android), Konica Minolta Mobile Print (iOS, Android & Windows 10 Mobile); Mobile Authentication and Pairing (Android & iOS) optional: Google Cloud Print; Wifi Direct

PRINTER SPECIFICATIONS (OPTIONAL)

Print controller	Embedded Fiery IC-418
Controller CPU	CPU type @ 2.7 GHz
Memory/HDD	2,048 MB / 500 GB
Page description language	Adobe PostScript 3 (CPSI 3020) PCL 6, PCL 5c
Operating systems	Windows 7 (32/64); Windows 8/8.1 (32/64); Windows 10 (32/64); Windows Server 2012; Windows Server 2012 R2; Windows Server 2016; Macintosh OS X 10.9 or later

SCANNER SPECIFICATIONS

Scan speed (mono/colour)	Up to 120/120 ipm in simplex Up to 240/240 ipm in duplex
Scan resolution	Up to 600 x 600 dpi
Scan modes	Scan-to-eMail (Scan-to-Me); Scan-to-SMB (Scan-to-Home); Scan-to-FTP; Scan-to-Box; Scan-to-USB; Scan-to-WebDAV; Scan-to-DPWS; Scan-to-URL; TWAIN scan
File formats	JPEG; TIFF; PDF; compact PDF; encrypted PDF; XPS; compact XPS; PPTX optional: searchable PDF; linearised PDF; PDF/A 1a and 1b; searchable DOCX/PPTX/XLSX
Scan destinations	2,100 (single + group); LDAP support
Scan functions	Annotation (text/time/date) for PDF; up to 400 job programs; real-time scan preview

COPIER SPECIFICATIONS

Imaging technology	Laser
Toner technology	Simitri® HD polymerised toner/Polymerised toner
Copy/print speed A4 (mono/colour)	Up to 75/65
Copy/print speed A3 (mono/colour)	Up to 37/32
Autoduplex speed A4 (mono/colour)	Up to 75/65
1st copy out time A4 (mono/colour)	3.6/4.9 sec.
Warm-up time	Approx. 22 sec. in mono; 35 sec in colour ²
Copy resolution	600 x 600 dpi
Gradation	256 gradations
Multicopy	1–9,999
Original format	A5–A3; custom sizes
Magnification	25–400% in 0.1% steps; auto-zooming
Copy function	Chapter; cover and page insertion; proof copy (print and screen); adjustment test print; digital art functions; job setting memory; poster mode; image repeat; overlay (optional); stamping; copy protection

FAX SPECIFICATIONS

Fax standard	Super G3 (optional)
Fax transmission	Analogue; i-Fax; Colour i-Fax; IP-Fax
Fax resolution	Up to 600 x 600 dpi
Fax compression	MH; MR; MMR; JBIG
Fax modem	Up to 33.6 Kbps
Fax destinations	2,100 (single + group)
Fax functions	Polling; time shift; PC-Fax; receipt to confidential box; Receipt to e-mail/FTP/SMB; up to 400 job programs

USER BOX SPECIFICATIONS

Storable documents	Up to 3,000 documents or 10,000 pages
Type of user boxes	Public; Personal (with password or authentication); Group (with authentication)
Type of system boxes	Secure print; Encrypted PDF print; Fax receipt; Fax polling
User box functions	Reprint; combination; Download; Sending (e-mail/FTP/SMB and Fax); Copy box to box

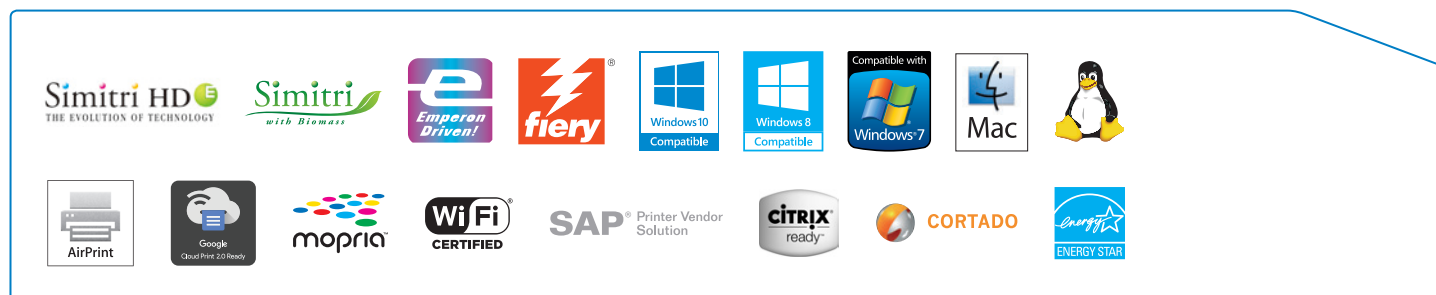
SYSTEM FEATURES

Security	ISO15408 Common Criteria (in evaluation); IP filtering and port blocking; SSL2; SSL3 and TLS1.0/1.1/1.2 network communication; IPsec support; IEEE 802.1x support; User authentication; Authentication log; Secure print; Kerberos; Hard disk overwrite (8 standard types); Hard disk data encryption (AES 256); Memory data auto deletion; Confidential fax receipt; Print user data encryption optional: Hard disk mirroring; Copy protection (Copy Guard, Password Copy)
Accounting	Up to 1,000 user accounts; Active Directory support (user name + password + e-mail + smb folder); User function access definition optional: Biometric authentication (finger vein scanner); ID card authentication (ID card reader); Authentication by mobile device (Android/iOS)
Software	PageScope Net Care Device Manager; PageScope Data Administrator; PageScope Box Operator; PageScope Direct Print; PageScope Web Connection; Print Status Notifier; Driver Packaging Utility; Log Management Utility

¹ If the maximum volume is reached within a period of one year, then a maintenance cycle must be performed

² Warm-up time may vary depending on the operating environment and usage

- All specifications refer to A4-size paper of 80 g/m² quality.
- The support and availability of the listed specifications and functionalities varies depending on operating systems, applications and network protocols as well as network and system configurations.
- The stated life expectancy of each consumable is based on specific operating conditions such as page coverage for a particular page size (5% coverage of A4). The actual life of each consumable will vary depending on use and other printing variables including page coverage, page size, media type, continuous or intermittent printing, ambient temperature and humidity.
- Some of the product illustrations contain optional accessories.
- Specifications and accessories are based on the information available at the time of printing and are subject to change without notice.
- Konica Minolta does not warrant that any specifications mentioned will be error-free.
- All brand and product names may be registered trademarks or trademarks of their respective holders and are hereby acknowledged.





KONICA MINOLTA

bizhub / C759/C659

A3



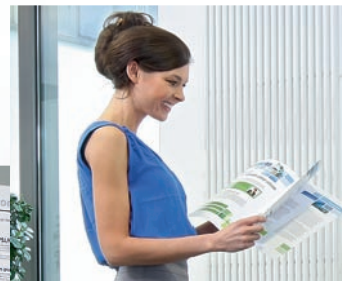
C759 **65** CL PPM **75** BW PPM

C659 **65** CL PPM **65** BW PPM

Giving Shape to Ideas

Modernises the internal workflow with astonishing productivity

The top-of-the-class scanning and output speed of this high-end colour MFP enables high input and output productivity to meet the sophisticated needs of large offices and CRDs requiring high-volume output.



bizhub C759/C659



Duplex Scanning
240
ipm

Full Colour Output
65
ppm

*Monochrome output, C759: 75ppm, C659: 65ppm

Large capacity ADF featuring top-of-the-class performance

Furnished with a maximum stacking capacity of 300 sheets and high-speed scanning capability of 240 ipm (duplex). The double-feed detector*¹ improves scanning speed to enhance the efficiency of high-volume scanning work essential to legal offices and educational institutes.

*1 Optional



Easy-to-view, easy-to-use 10.1 inch panel

The large 10.1 inch touch panel is furnished with multi-touch capability and also features a mobile touch area (NFC) to connect to mobile devices. 4GB is allocated to the memory so that OpenAPI and IWS applications can be operated with ease using the large size screen.



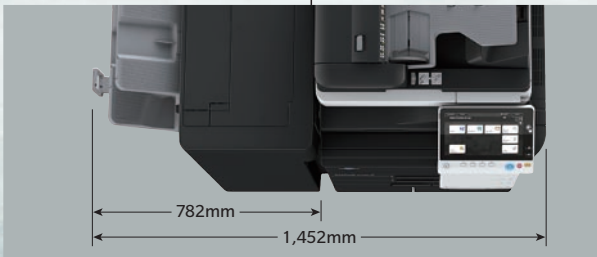
First Copy Time
3.6
sec. or less

*C759 monochrome (colour: 4.9 sec. or less)

C659 colour: 4.9 sec. or less, monochrome: 3.7 sec. or less

Warm-up Time
22
sec. or less

*Monochrome (colour: 35 sec. or less)



Built-in Z-fold finisher FS-537

A Z-fold option can be incorporated into the FS-537 finisher to enable the performance of multiple tasks in a compact space. Up to 100% productivity is realised for punching and stapling jobs to provide rapid response to printing and copying needs.

Mobile & cloud-based solutions supported

Greater affinity with mobile devices and various cloud-based services enables realisation of a seamless workflow structure. Because the solution software and the operation methods are common among all bizhub series, the operator can perform smooth operation without hesitation, achieving a high efficiency in job handling.

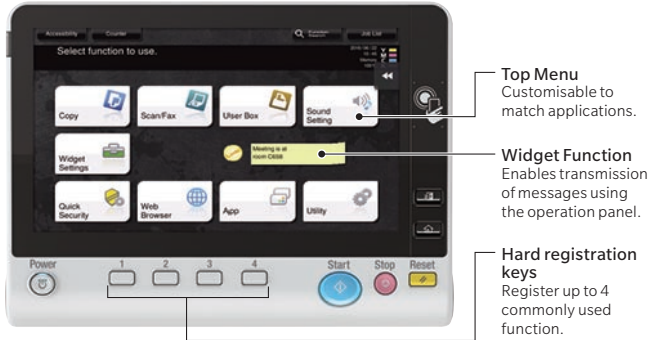


Maximises the productivity to enhance the in-house production

Speedy input/output of high volume jobs

Easy-to-see, easy-to-use 10.1 inch panel

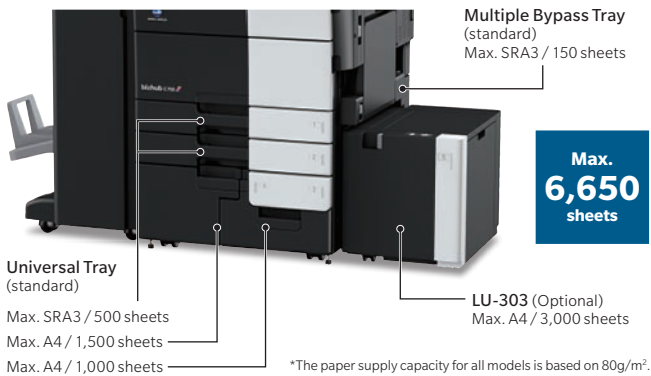
The large 10.1 inch panel ensures quick and easy operation. The interface helps to reduce operational errors, this user-friendly panel enhances everyday work.



Plenty of paper feed options

The standard paper capacity of the MFP is 3,650 sheets. The optional Large Capacity Unit will bring the maximum of 6,650*1 sheets to reduce overall MFP downtime caused by paper replenishment.

*1 When optional Large Capacity Unit LU-303 are mounted.



Faster printing speed

This series achieved significantly fast copy/print speed of 75 ppm*1. This answers to CRDs and high-volume offices' requirement of a speedy large-volume output. Shortening output time enables effective use of time and manpower, resulting efficiency and cost reduction.

*1 Printing speed for C759. C759: 75/65 sheets, C659: 65/65 sheets (Colour/Black&White, A4 horizontal)

Faster scanning speed and precise outputs create smooth workflow

The ADF features a 300-sheet paper holding capacity and impressive duplex 240 ipm (120 sheets for double-sided) scan speed. Its high productivity supports business efficiency and speed, while its instant scanning and copying meet customers' high-volume needs. An error message appears when double feeding is detected*1. The scanned document can be previewed on the screen to determine where scanning should be resumed.

*1 Optional Double feed detection Kit UK-501 is required.

Max. 300 sheets	Simplex 120 ipm	Duplex 240 ipm
------------------------	------------------------	-----------------------

* When A4 landscape at 300dpi

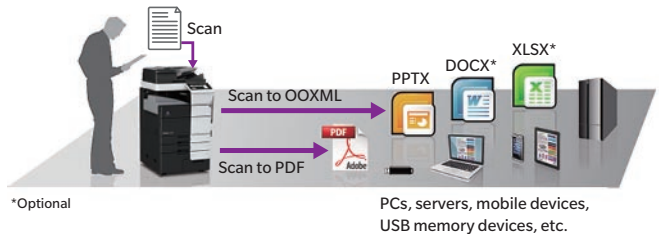


Hardcopy digitisation

Scanned hardcopies can be saved as searchable PDFs*1 or editable files in the PowerPoint, Excel or Word format*2. The files are small with excellent image quality and can be saved in the internal HDD or mobile devices.

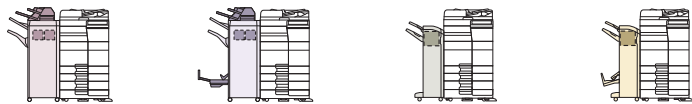
*1 Optional i-Option LK-102 v3 or LK-110 v2 is required.

*2 Editable Excel/Word formats require optional i-Option LK-110 v2.



Optional finishers

A variety of finishers is available to enable advanced post-processing including stapling and punching in various patterns, saddle-stitching, etc.



Features	Finishing image	FS-537 ^{1,2}	FS-537SD ^{1,2}	FS-536 ^{1,2}	FS-536SD ^{1,2}
Sorting (offset sorting)	Paper output position is shifted for each set	○	○	○	○
Stapling	Corner stapling (diagonal) Corner stapling (parallel) ³ Corner stapling (parallel) ³ Two-point stapling (parallel) ³	Max. 100 sheets (52 – 80g/m ²)	Max. 100 sheets (52 – 80g/m ²)	Thin/normal (52 – 90g/m ²): 50 sheets Thick (91 – 120g/m ²): 30 sheets Extra thick (121 – 209g/m ²): 15 sheets	Thin/normal (52 – 90g/m ²): 50 sheets Thick (91 – 120g/m ²): 30 sheets Extra thick (121 – 209g/m ²): 15 sheets
Saddle stitching (booklet) & folding	Booklet Centre-fold Letter-fold	–	Max. 20 sheets	–	Max. 20 sheets
Z-folding	Z-folding	Z-folding unit ZU-609 (52 – 90g/m ²)	Z-folding unit ZU-609 (52 – 90g/m ²)	–	–
Punching	Two-hole punch Upper two-hole punch	Punch kit PK-523 (up to 300g/m ²)	Punch kit PK-523 (up to 300g/m ²)	Punch kit PK-520 (up to 300g/m ²)	Punch kit PK-520 (up to 300g/m ²)
Cover sheet & insert sheet	Cover sheet Insert sheet	Post inserter PI-507	Post inserter PI-507	○	○

*1 Paper output to the main body is possible. Up to three output destinations can be set. *2 Relay unit RU-513 is required.

*3 Parallel stapling is only compatible with A3, A4/B5 vertical and A4/A5 horizontal on FS-537/FS-537SD/FS-536/FS-536SD. *4 Diagonal corner stapling is not possible.

Efficient use of mobile & cloud systems

Connect with mobile devices

Enjoy a flexible mobile work style by using bizhub C759/C659 together with iOS, Android and Windows 10 mobile devices. Users can take advantage of printing and other bizhub features through their favourite industry standard mobile technologies (see right).

Convenient Mobile Touch Area

Pair Android mobile devices^{*1} with bizhub C759/C659 by simply holding them close to the Mobile Touch Area on the multi-touch screen. NFC (Near Field Communication) ensures smooth, quick connections. The Mobile Touch Area can also be used to log in, print files, scan documents and import scanned data^{*2}. iOS devices pair using Bluetooth LE (BLE)^{*3}.

^{*1} Android OS 4.4 or higher and Konica Minolta Mobile Print must be installed.

^{*2} Initial setup required for logging in. Wireless LAN environment required for printing and scanning.

^{*3} Optional Device Connection I/F Kit EK-609 is required.



Wireless LAN*

Access Point mode and Simple Access Point mode via Wireless LAN allow computers and mobile devices in your office to wirelessly connect with bizhub C759/C659. This creates a fully independent network that supports BYOD (bring your own device) without additional investment. Connection with your company's existing wireless LAN is also supported.

* Optional Upgrade Kit UK-212 or UK-215 is required.

QR code display screen



AP mode and Simple AP mode (Wireless LAN)








Up to 5 devices can access bizhub C759/C659 simultaneously in AP mode with UK-212 equipped.

Up to 4 devices can access bizhub C759/C659 simultaneously in Simple AP mode with UK-215 equipped.

bizhub Remote Access

The bizhub Remote Access app allows operation of bizhub C759/C659 from Android devices and iPhone/iPad/iPod touch. Users can wirelessly operate bizhub hardware and software keys, enter data, import scanned data, send data from bizhub C759/C659 using the mobile device's address book and more.

Connect instantly without print drivers to industry standard mobile technologies

	iOS	Android	Windows 10 Mobile
 <p>AirPrint Print from any compatible printer on your company's wireless LAN using AirPrint, Apple's standard printing system. It is compatible with iOS 4.2 and Mac OS 10.7 or later.</p>	✓		
 <p>Mopria Print Service This wireless printing technology provides a universal print driver for printing from devices installed with Android 4.4 or later.</p>		✓	
 <p>Google Cloud Print Leading technology connects bizhub C759/C659 with the web so users can print from anywhere outside the office regardless of OS, device or application. <small>Note: Google Cloud Print Setup and Google account registration are required.</small></p> <p><small>*Available soon</small></p>	✓	✓	
 <p>Konica Minolta Print Service This application enables printing directly from devices running Android 4.4 or later through your company's wireless LAN.</p>		✓	
 <p>Konica Minolta Mobile Print Connect mobile devices with bizhub C759/C659 via Wi-Fi to print documents and images as well as import scanned data.</p>	✓	✓	✓



Establish an environment for the safe and comfortable output operation

Fully reliable security for confidentiality

Easy authentication

Smooth and efficient password, IC card and biometric (finger vein) authentication are supported. In addition to regular authentication via server, server-free authentication can also be performed directly on the main unit with detailed control of access to each function, including copying, printing, scanning and faxing. These features complement your company's existing security measures to protect important data and hardcopy resources, prevent unauthorised bizhub access and strengthen risk management.

IC card authentication

Authentication is possible with various types of IC card. First command bizhub C759/C659 to print from a PC or mobile device. Then wave the ID card over a card reader on bizhub C759/C659 to print. Authentication can also be performed with any Android device* equipped with an NFC antenna.

*Requires Android 4.4 or later that supports HCE (Host Card Emulation) or Konica Minolta Mobile Print.

Notes: Optional Authentication Unit AU-201S is required. Compliant non-contact IC cards include FeliCa (IDm), SSFC, FCF, FCF (campus), FeliCa Private and MIFARE (UID).



Biometric finger-vein authentication

Finger vein biometric authentication is easy to implement and makes forged access virtually impossible. After commanding bizhub C759/C659 to print from a PC or mobile device, the authorised user just scans his or her finger at bizhub C759/C659 to print.

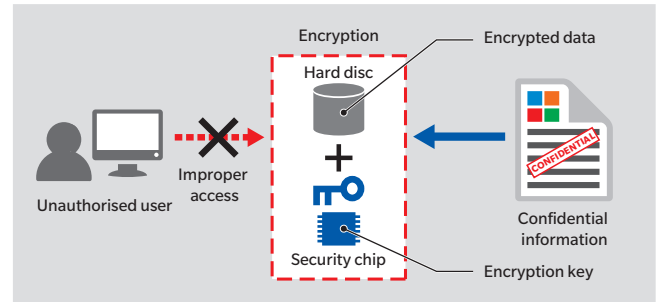
Note: Optional Biometric Authentication Unit AU-102 and Working Table WT-506 are required.



TPM (Trusted Platform Module)

Confidential information such as certificates and passwords can be securely managed in bizhub C759/C659. Just activate the TPM function to encrypt the information and save it in a dedicated storage area in the TPM security chip. This prevents unauthorised reading from external devices.

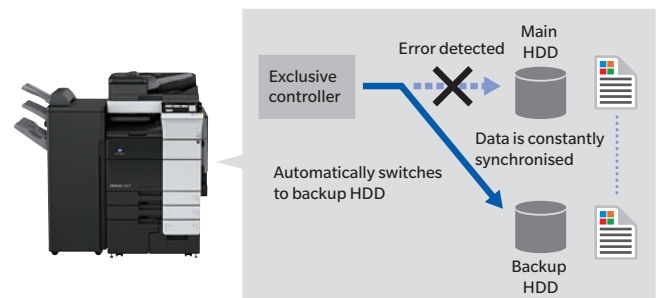
*Optional i-Option LK-115 v2 is required.



HDD mirroring*

This feature ensures that all data saved on the main HDD is always saved on a backup HDD as well. If the main HDD fails, bizhub C759/C659 automatically switches to the backup HDD to prevent operational downtime and data loss.

*Optional HDD Mirroring Kit HD-524 is required.



PDF password protection

When saving scanned data as a PDF file, the data can be encrypted to prevent opening of the file unless the user inputs the correct password. The user can also encrypt the PDF with his or her digital certificate, create a PDF/A-based PDF file* and add file properties.

*Optional i-Option LK-102 v3 or LK-110 v2 is required.



Compliance with industry standards*

This model meets IEEE 2600.1 international protection profile standards, ensuring a high level of document security. All security features have been independently evaluated and certified ISO 15408 EAL3 compliant.

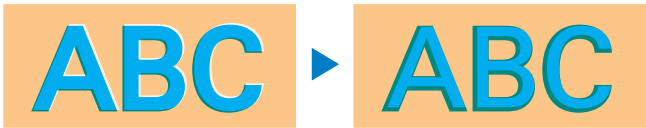
*Application is still pending as of September 2017.



Compatible with various output tasks

Auto Trapping

This feature is to eliminate gaps between text and background by overprinting where two or more colours meet. Both PS and PCL print driver can be used. Texts become more legible.

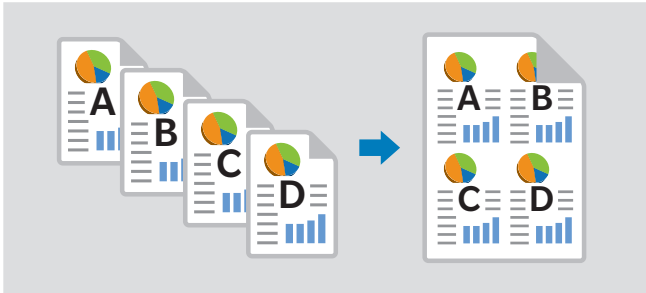


Auto Trapping OFF

Auto Trapping ON

N-in-One copying

It's easy to copy multiple pages on a single sheet of paper to reduce paper costs and facilitate viewing of related pages. Users can copy up to 8 pages on a single side of paper when scanning a paper document and up to 16 pages when printing from a file.



Banner print*

Create appealing promotional materials in-house on bizhub C759/C659. Simply select the Banner Print feature and select the file to print. Then place the long paper (up to 1,200mm) in the bypass tray with the paper setting guide flipped up. When ready, print away for big, beautiful results.

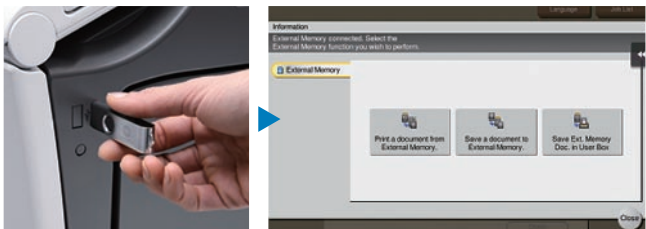
*Requires Optional Banner Paper Setting Guide MK-715.



USB port

The USB port allows transferring of files to and from bizhub C759/C659 via flash drive. Once a file is stored in bizhub C759/C659, it can be used to output documents or transferred to other devices.

Notes: Compatible with PDF, Compact PDF, JPEG, TIFF, XPS, Compact XPS, OOXML (docx, xlsx, pptx) files. Some USB flash drives may not be compatible. Print output may differ from what appears on the PC screen.



ID copy

This feature makes it easy to print the front and back of an ID card on the top and bottom of a single page. For extra easy access, place an ID Copy shortcut button on the top screen.



Automatic paper size measurement

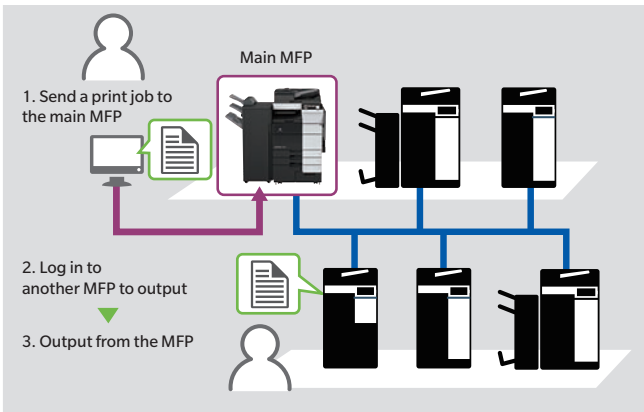
Automatic paper size measurement can automatically measure the size of non-standard sized paper placed on the glass platen. It can also register the size in memory if desired. These features make it easy for anyone to handle non-standard paper sizes without making measuring mistakes or input errors. Use of the two standard cassettes (Tray 1 & 2) included in the main unit allows feeding of non-standard size paper, greatly reducing the time and effort consumed by paper replenishment during high-volume non-standard size paper printing.

	Size	Basis weight
Tray 1	width : 139.7mm - 320mm	52 - 256g/m ²
	length : 182mm - 457.2mm	
Tray 2	width : 139.7mm - 320mm	
	length : 182mm - 457.2mm	

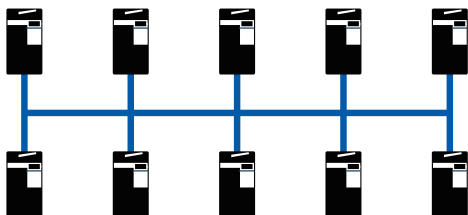
Server-less pull printing

bizhub C759/C659 supports server-less pull printing. Users can send data to a main MFP and authenticate themselves at any MFP on the network print group (up to 10 MFPs x 10 groups) to pull the print job.

Note: Optional i-Option LK-114 must be installed on bizhub C759/C659.



Ubiquitous printing without a server



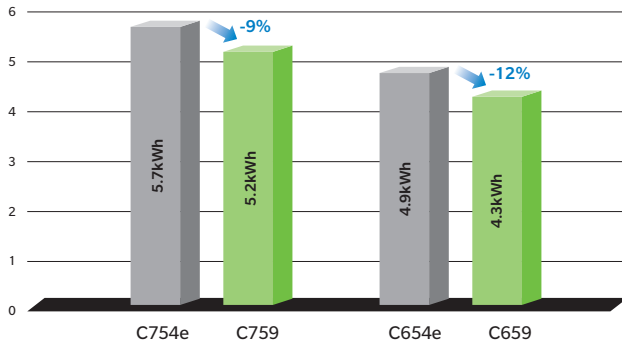
Up to 100 MFPs can be connected without a server.

Minimal environmental impact

Low power consumption

bizhub C759/C659 minimises energy use during normal operation. It easily clears the latest EnergyStar Program TEC standards and reduces both CO₂ emissions and TCO.

TEC values (kWh)



*Values for 220-240 V

*TEC values applied to the International Energy Star Program Version 2.0

Sleep mode

bizhub C759/C659 automatically switches to sleep mode after a user-defined period of inactivity. This mode reduces power consumption to a mere 0.5W by cutting off power to the CPU. When users want to use bizhub C759/C659 again, it switches back to full power in seconds.

Eco-friendly materials

Approximately 64% of the outer surfaces and 30% of the weight of resin parts on bizhub C759/C659 consist of recycled materials. This includes PC/PET developed by Konica Minolta using advanced chemical processing technology. 70% of PC/PET on outer surfaces is PCR (post-consumer recycled).



Recycled PC/ABS

bizhub c759/c659



https://www.biz.konicaminolta.com/colour/c759_c659/index.html

Product appearance, configuration and/or specifications are subject to change without notice. This product is not available for some countries or regions.

KONICA MINOLTA, the KONICA MINOLTA logo, symbol mark, Giving Shape to Ideas, bizhub, PageScope, Simitri, Emperon, i-Option, INFO-Palette, Konica Minolta Optimised Print Services and their respective logos are registered trademarks or trademarks of KONICA MINOLTA, INC.
 Google, Android and Google Cloud Print are registered trademarks or trademarks of Google Inc. in the U.S. and other countries.
 Windows, Excel and PowerPoint are registered trademarks or trademarks of Microsoft Corporation in the U.S. and other countries.
 Mac, Mac OS, iPhone, iPad, iPod touch and AirPrint are registered trademarks or trademarks of Apple Inc. in the U.S. and other countries.
 iOS is a registered trademark or trademark of Cisco in the U.S. and other countries.
 Bluetooth is a registered trademark or trademark of Bluetooth SIG, Inc.
 Adobe and PostScript are registered trademarks or trademarks of Adobe Systems Incorporated in the U.S. and other countries.
 Citrix is a registered trademark or trademark of Citrix Systems, Inc in the U.S. and other countries.
 Linux is a registered trademark or trademark of Linux Torvalds in the U.S. and other countries.
 Unix is a registered trademark or trademark of The Open Group.
 SAP is a registered trademark or trademark of SAP AG.
 Mopria is a registered trademark or trademark of Mopria Alliance Inc.
 NFC is a registered trademark or trademark of the NFC Forum.
 Felica is a registered trademark or trademark of Sony Corporation.
 SSFC is a registered trademark or trademark of Dai Nippon Printing Co., Ltd.
 MIFARE is a registered trademark or trademark of NXP B.V.
 IEEE is a registered trademark or trademark of The Institute of Electrical and Electronics Engineers, Inc.
 All other brands and product names are registered trademarks or trademarks of their respective companies or organisations.



From consulting, system design, to operations, Konica Minolta offers total support to optimise your office output environment.

<http://www.biz.konicaminolta.com/services/ops>

Requirements for safe use

- Please read and follow the instruction manual to ensure safe operation.
- Only operate using appropriate power supply and voltage.
- Connecting the earth wire to an inappropriate place may cause explosion or electric shock. Please connect accordingly (Taiwan and the Philippines only).

KONICA MINOLTA, INC.
 2-7-2 Marunouchi Chiyoda-ku, Tokyo, Japan
<http://www.biz.konicaminolta.com>