

KONICA MINOLTA

Giving Shape to Ideas



bizhub C3851/C3351

World-class colour
A4 multifunction printers
Help create value in any office





KONICA MINOLTA

**I WANT OFFICE
SOLUTIONS
THAT HELP ME
ON MY WAY**



**INTELLIGENT
OFFICE SOLUTIONS**

Giving Shape to Ideas



WORKING ENVIRONMENTS IN STEP WITH TODAY'S WORLD

The modern working environment is a flood of data and information. Unless you're flexible, mobile and plugged into the Net around the clock, you're at a clear disadvantage. With Konica Minolta you can have the information at your fingertips wherever and whenever you need it.

Our solutions enhance and accelerate your business activities rather than slowing them down. It's the only way to stay ahead of your competitors and serve your customers competently. So with this in mind, we'd like to wish you an enjoyable and fruitful working day!



KONICA MINOLTA

bizhub C3851

✓ Colour A4 multifunctional

✓ Up to 38 pages per minute

Functionality



- Colour
- Black & white
- PCL/PS
- Local/Network
- USB

Printing



- Colour
- Black & white
- Scan-to-eMail
- Scan-to-SMB
- Scan-to-Home
- Scan-to-FTP
- Scan-to-HDD
- Scan-to-USB
- Scan-to-WebDAV
- Scan-to-URL
- TWAIN Network

Scanning



- Colour
- Black & white

Copying



- Super G3 Fax
- PC-Fax
- i-Fax

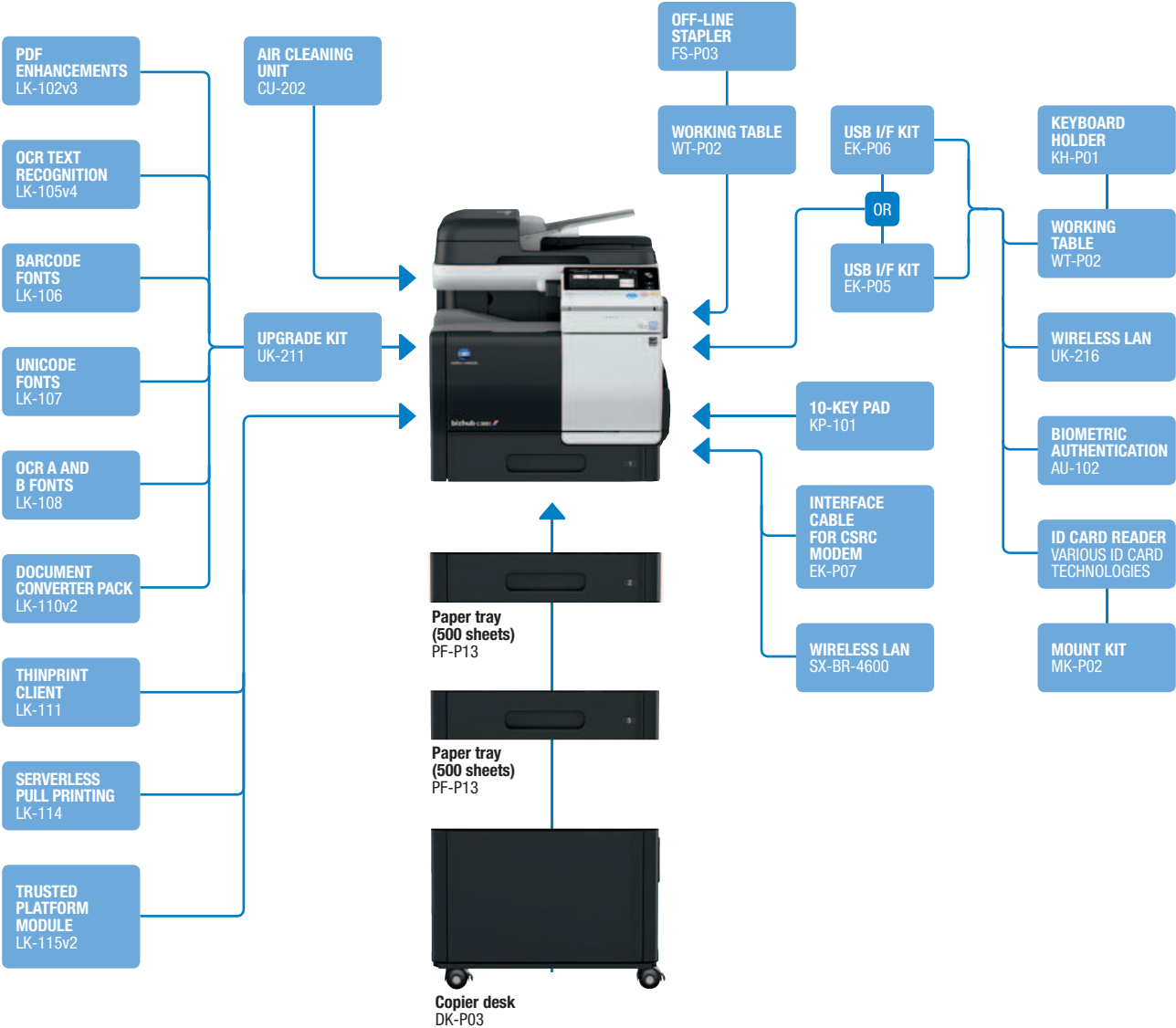
Faxing



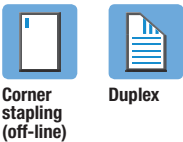
Technology

Emperon™ – print controller	Easily compatible with different users and IT environments through Konica Minolta's unified print technology	✓
Simitri® HD – polymerised toner	Delivers high print quality and yet ensures reduced print spending as well as lower environmental impact	✓
OpenAPI – solution platform	Server-based applications provide efficient workflows for the entire MFP fleet	✓
i-Option – special feature	Offers extended scope and advanced MFP functionality in line with individual requirements	✓
CSRC – remote service	Keeps productivity up with online monitoring of devices and consumables through the Konica Minolta service	✓
IWS – panel customisation	Improved user-device interaction and enhanced productivity through full MFP panel customisation	✓

Option diagram



Finishing functionalities



Descriptions

bizhub C3851	A4 multifunctional with 38 ppm b/w and colour. Standard Emperon™ print controller with PCL, PostScript and XPS support. Paper capacity of 550 sheets and 100-sheet manual bypass. Automatic duplex document feeder and duplex unit standard. 2 GB memory, 250 GB hard disk.
PF-P13 Paper tray	A4, 500 sheets, 60–90 g/m ²
DK-P03 Copier desk	Provides storage space for print media, etc.
FS-P03 Off-line stapler	20-sheet corner stapling
KP-101 10-Key pad	For use instead of touchscreen
WT-P02 Working table	Off-line stapler placement, etc.
EK-P07 Interface cable for CSRC modem	GPRS modem connection for CSRC
ID card reader	Various ID card technologies
LK-102v3 PDF enhancements	PDF/A (1b), PDF encryption, digital signature
LK-105v4 OCR text recognition	Searchable PDF and PPTX, PDF/A (1a)
LK-106 Barcode fonts	Supports native barcode printing
LK-107 Unicode fonts	Supports native Unicode printing

LK-108 OCR A and B fonts	Supports native OCR A and B font printing
LK-110v2 Document converter pack	Generates various file formats incl. DOCX, XLSX and PDF/A
LK-111 ThinPrint® client	Print data compression for reduced network impact
LK-114 Serverless Pull Printing	Secure and Follow Me printing solution requiring no server application. Host device requires 4 GB memory. (Available from April 2017)
LK-115v2 TPM activation	Trusted Platform Module for protection of data encryption and decryption
MK-P02 Mount kit	Installation kit for ID card reader
UK-216 Wireless LAN	Wireless LAN and wireless LAN Access Point Mode
SX-BR-4600 Wireless LAN	Wireless LAN to network connector
CU-202 Air cleaning unit	Improving Indoor Air Quality by reduced emissions
EK-P05 USB I/F kit	USB keyboard connection
EK-P06 USB I/F kit	USB keyboard connection, Bluetooth
UK-211 Upgrade kit	2 GB memory extension for upgrades
KH-P01 Keyboard holder	To place USB keyboard
AU-102 Biometric authentication	Finger vein scanner

Technical specifications

SYSTEM SPECIFICATIONS

System memory (standard/max)	2 GB/4 GB
System hard disk	250 GB (standard)
Interface	10/100/1,000-Base-T Ethernet; USB 2.0; Wi-Fi 802.11b/g/n (optional)
Network protocols	TCP/IP (IPv4/IPv6); SMB; LPD; IPP; SNMP; HTTP; HTTPS
Frame types	Ethernet 802.2; Ethernet 802.3; Ethernet II; Ethernet SNAP
Automatic document feeder	Up to 50 originals; A5–A4; 50–128 g/m ² ; reverse automatic document feeder
Printable paper size	A6–A4; customised paper sizes
Printable paper weight	60–210 g/m ²
Paper input capacity (standard/max)	650 sheets/1,650 sheets
Paper tray input (standard)	550 sheets; A6–A4, 60–210 g/m ²
Paper tray input (optional)	2 x 500 sheets; A4, 60–90 g/m ²
Manual bypass	100 sheets; A6–A4; custom sizes; 60–210 g/m ²
Automatic duplexing	A4; 60–210 g/m ²
Finishing modes (optional)	Staple (off-line)
Output capacity	Max.: 250 sheets
Stapling (optional)	Max.: 20 sheets (off-line stapling)
Copy/print volume (monthly)	Rec.: 6,500 pages Max. ¹ : 120,000 pages
Toner lifetime	K: 13,000; CMY: 12,000 pages
Imaging unit lifetime	K: 70,000; CMY: 60,000 pages
Power consumption	220–240 V/50/60 Hz; Less than 1.7 kW
System dimensions (W x D x H)	555 x 584 x 603 mm
System weight	Approx. 49.2 kg (without options)

PRINTER SPECIFICATIONS

Print resolution	600 x 600 dpi 1,200 x 1,200 dpi (reduced speed)
Page description language	PCL 6 (XL 3.0); PCL 5c; PostScript 3 (CPSI 3016); XPS
Operating systems	Windows Vista (32/64) Windows 7 (32/64) Windows 8 (32/64) Windows 10 (32/64) Windows Server 2008 (32/64) Windows Server 2008 R2 Windows Server 2012 Windows Server 2012 R2 Windows Server 2016 Macintosh OS X 10.x Linux Unix Citrix
Printer fonts	80 PCL Latin; 137 PostScript 3 Emulation Latin
Print functions	Direct print of TIFF; XPS; PDF (v1.7) and OOXML (DOCX, XLSX, PPTX); secure print; combination; n-up; poster; booklet page order; watermark
Mobile Printing	AirPrint (iOS); Mopria (Android); Google Cloud Print (optional); WiFi Direct (optional); Konica Minolta Print Service (Android); PageScope Mobile (iOS/Android/Windows 10 Mobile)

SCANNER SPECIFICATIONS

Scan speed (mono/colour)	Up to 35 ipm
Scan resolution	Up to 600 x 600 dpi
Scan modes	Scan-to-eMail (Scan-to-Me) Scan-to-SMB (Scan-to-Home) Scan-to-FTP Scan-to-HDD Scan-to-USB Scan-to-WebDAV Scan-to-URL Network TWAIN scan
File formats	JPEG; TIFF; PDF; PDF/A (1b); Compact PDF; encrypted PDF; XPS
Scan destinations	2,100 (single + group); LDAP support
Scan functions	Up to 400 job programs

COPIER SPECIFICATIONS

Copying process	Electrostatic laser copy; tandem; indirect
Toner system	Simitri® HD polymerised toner
Copy/print speed A4 (mono/colour)	Up to 38 ppm
Autoduplex speed A4 (mono/colour)	Up to 38 ppm
1st copy out time (mono/colour)	6.2/7.1 sec.
Warm-up time	Approx. 20 sec. ²
Copy resolution	600 x 600 dpi
Gradation	256 gradations
Multicopy	1–9,999
Original format	Max. A4
Magnification	25–400% in 0.1% steps; auto-zooming
Copy functions	Electronic sorting; multi-job; adjustments (contrast, sharpness, image density); proof copy; interrupt mode; colour mode; separate scan; sort/group; combination; original selection; ID card copy; 2-in1; 4-in-1

FAX SPECIFICATIONS

Fax standard	Super G3
Fax transmission	Analogue i-Fax
Fax resolution	Up to 600 x 600 dpi (ultra-fine)
Fax compression	MH; MR; MMR; JBIG
Fax modem	Up to 33.6 Kbps
Fax destinations	2,100 (single + group)
Fax functions	Time shift; PC-Fax; fax forwarding; up to 400 program dials

SYSTEM FEATURES

Security	ISO15408 Common Criteria (in evaluation); IP filtering and port blocking; SSL2; SSL3 and TLS1.0 network communication; IPsec support; IEEE 802.1x support; user authentication; secure print; hard disk overwrite (8 standard types); hard disk data encryption; copy protection (print only)
Accounting	Up to 1,000 user accounts; Active Directory support ID card authentication optional
Software	PageScope Net Care Device Manager PageScope Direct Print Print Status Notifier Download Manager Driver Packaging Utility

¹ If the maximum volume is reached within a period of one year, then a maintenance cycle must be performed

² Warm-up time may vary depending on the operating environment and usage

- All specifications refer to A4-size paper of 80 g/m² quality.
- The support and availability of the listed specifications and functionalities varies depending on operating systems, applications and network protocols as well as network and system configurations.
- The stated life expectancy of each consumable is based on specific operating conditions such as page coverage for a particular page size (5% coverage). The actual life of each consumable will vary depending on use and other printing variables including page coverage, page size, media type, continuous or intermittent printing, ambient temperature and humidity.
- Some of the product illustrations contain optional accessories.
- Specifications and accessories are based on the information available at the time of printing and are subject to change without notice.
- Konica Minolta does not warrant that any specifications mentioned will be error-free.
- All brand and product names may be registered trademarks or trademarks of their respective holders and are hereby acknowledged.



Visit our product page

YOUR EMPLOYEES' POTENTIAL: WE'LL HELP YOU USE IT TO THE FULL!

With office solutions from Konica Minolta, you and your employees can really get ahead. This is so because our solutions are geared to your requirements, not the other way round. We focus on achieving a perfect symbiosis of the paper and digital worlds. After all, it is the entire document life cycle that counts.

▀ The complete document life cycle

Printing is only one part of the document life cycle. We know there's more to it than that (such as creation, archiving and retrieval). Information is a valuable "resource", but you can only use it to the full if you view the document life cycle as a whole.

▀ Intelligent document creation

Scan in paper documents, perform text recognition and output forms and barcodes – these functions provide the perfect basis for automatic forwarding, editing and archiving.

▀ Edit paper documents in Word and Excel

To edit paper-based documents electronically, simply scan in your paper documents and you're ready to go. It's as easy as that! Time-consuming transcription work immediately becomes a thing of the past.

▀ Easy archiving solutions

Easy and efficient archiving solutions based on searchable PDF files enable you to locate archived documents quickly.

▀ Good to know!

Statistically speaking, each employee spends an average of 7.4 hours a week searching for data. It doesn't have to be that way!

(IDC 2010)



▀ Greater effectiveness on the move: mobile printing from smartphones and tablets

Now you can print from mobile devices and take advantage of mobile data entry whenever and wherever you want, thanks to Wi-Fi, e-mail and AirPrint.

▀ Manage documents efficiently

We can offer two options: 1) Solutions to scan your documents directly into your existing document management system or 2) a completely new DMS, which we will develop and implement for you. Your needs come first.

▀ Follow-me printing

Want to be able to send your print job and collect the document from any device on the network? With follow-me printing, you can. That's just one example of the many ways we can facilitate mobile working.

THE BEST OF BOTH WORLDS: DIGITAL AND PAPER-BASED

Multifunctional systems and applications from Konica Minolta bring together the digital and paper-based worlds. As a result, they can accommodate all the demands of modern business with smooth workflows that save you time and money.

Print and copy with absolute ease

Not only do our multifunctional systems allow no-nonsense printing and copying, they're also brilliant at handling all kinds of media: formats ranging from A6 to SRA3, grammages from 52 to 300 gsm, plus user-defined formats and banners up to a striking 1.2 m in length.

Highly efficient scanning and faxing

Quick and easy scanning has become an indispensable part of everyday office life. Once digitalised, documents can be directly transferred to an electronic mailbox, an archive, a USB stick or an FTP server. Faxes can also be sent or received directly via a PC.

Open your eyes to perfect print quality

You can enjoy high-quality printouts thanks to our high-definition polymerised toner (Simitri® HD). At the same time your electricity bill is significantly reduced due to a lower melting temperature and power consumption.

All's well that ends well with a professional finish

We offer a wide range of professional finishing functions, the likes of which you won't find anywhere else: from stapling and folding right through to brochures that are ready to go. A practical solution for handouts, direct mailings or customer leaflets.

Easy and customised operation.

- Large colour touch screen
- Works like a smartphone
- Fully functional Web browser
- Customisation service: have the design and menu structure customised for your organisation



Our bizhub multifunctionals were named the product line of the year in 2011, 2012 and 2013.



OFFICE SOLUTIONS THAT THE IT DEPARTMENT WILL LIKE

Printing and document solutions from Konica Minolta are not just easy to implement – once up and running, they require very little maintenance. If you want, we even take full charge of both aspects with our professional services. This frees up time for IT departments to spend on their core competencies, thus benefitting the whole company.

▀ “Downtime”: a little word you need not worry about

Konica Minolta systems are robust and have been designed with reliable long-term operation in mind. In the unlikely event of faults, help is at hand in the form of interactive tutorials on the device display, a remote diagnostics system and a fast-response service team.

▀ Easy automation: toner orders and service requests

Can't print because no one has ordered any toner or placed a service request? Put a stop to this problem with Konica Minolta automated services and let your device take charge!

▀ Device data and printing costs at a glance

From current running data and toner levels right through to precise printing costs and error messages, the device overview shows you everything at a glance – at any time and at the touch of a button.

▀ The universal printer driver

One for all: the universal printer driver is available for most Konica Minolta devices, enabling employees to operate different printing systems with ease.

▀ Let us worry about your printing infrastructure

Konica Minolta has developed a professional approach for finding and implementing the right printer landscape for you. These Optimized Print Services (OPS) also include a long-term management service. All you have to worry about is your core business, saving you time and money as well as your sanity.



▀ Smart device management

So practical! You no longer have to assign user rights or carry out firmware updates separately on each device. With Konica Minolta, you can do it all with one central tool.

▀ Complete integration

Whether in a Windows, Linux or Mac environment, you'll have absolutely no problems integrating bizhub systems and various software solutions, which are easy to connect to SAP and SharePoint, etc.

CUT DOCUMENT COSTS AND INCREASE EFFICIENCY

Are you aware of your printing costs? And did you know that the purchase of hardware and toner only accounts for a small proportion? With the right partner, you can not only calculate the overall costs precisely (including administration, financing, logistics, etc.) but also save a great deal. Konica Minolta has a lot to offer here:

▀ The first step: cost transparency

Don't just record your printing costs in general but allocate them to users, departments and projects. This is the key to performing precise analyses and making your employees more cost-conscious.

▀ Are you aware of your document costs?



From our experience we know that only 1 in 10 organisations know what they spend on printing.



On average, up to 6% of a company's revenue is spent on document management. (InfoTrends 2010)

40% of printouts are discarded within 24 hours. (Newsweek 2009)

For every euro spent on printing as such, another nine euros are spent on burdened costs. (ALL Associates Group 2012)



Printing costs
(Hardware, toner, maintenance, paper, etc.)

Burdened costs
(IT support, administration, purchasing & storage of materials, document-related processes, etc.)

▀ The good news:



You could save up to 30% of these costs. (IDC 2009, Gartner 2013)

▀ Cost savings: optimise your printer fleet

Your printer fleet can easily become a money trap. Not using it to full capacity is just as expensive as a high error rate. With our effective monitoring tools, you keep your printer fleet under control and spot potential savings immediately.

▀ Digitisation saves time and money

The digital world provides rapid access to information, thereby increasing productivity while frequently reducing the amount of material that has to be printed. What's more, an electronic archive can free up valuable office space. The result: you save time and money.

▀ Easy print cost control

Printing costs can actually be controlled: define, for example, who is allowed to print in colour. You can stipulate that only efficient systems are to be used for large print jobs. Or make duplex printing the default setting. The world's your oyster!

▀ Less is more: avoid unnecessary prints

It may be hard to believe, but one in nine printouts never even gets collected from the printer. It doesn't have to be that way! With follow-me printing, the printing process has to be enabled directly on the device.

▀ Even more efficient: smooth document workflows

With Optimized Print Services (OPS) by Konica Minolta, all of your business-relevant document processes are thoroughly analysed in order to design and implement improved workflows. You benefit from savings in time and money and thus ensure the highest possible efficiency in your daily business.



COMPLETE PEACE OF MIND: SECURITY COMES FIRST

In a world where the information advantage is of ever increasing importance, data security is also growing in significance – that goes for paper-based and digital data alike. For your peace of mind, Konica Minolta is an industry leader in terms of its security standards.

Secure integration into your network

The printers on your network must also meet all the necessary safety requirements. Our IEEE 802.1X SSL and IPsec protocol authentication methods allow easy integration into protected networks, plus secure network communication. Virtually all bizhub systems conform to the ISO 15408 EAL3 standard, which means they meet the highest international security standards.

Protection of confidential documents

When it comes to protecting confidential documents, there's no room for compromise, whether they are on the printer hard disk or in the collection tray. With Konica Minolta, protection is ensured in various ways, including data encryption, secure deletion, watermark copy protection and PDF signatures.

Access control and user rights

User authentication is one of the key factors for ensuring security. With us, it comes in the form of a magnetic card, a PIN code or a biometric fingerprint scan. Individual access rights can be defined for each user.



Your confidential data is safe

- The printing of confidential data (e.g. payslips, R&D results) or personal documents is protected
- Data security is always essential when employees leave and new ones join; additionally, protection against industrial espionage is becoming increasingly important
- Electronic archives can be protected against conventional burglaries or accidental fire

Environmental well-being

Konica Minolta puts environmental friendliness and sustainability at the top of the agenda. This is why both our solutions and our organisation have been given numerous awards.



Better safe than sorry: secure print

To prevent any printouts from falling into the wrong hands, the "Secure print" feature requires authentication directly on the device prior to printing. This is very useful when handling sensitive information within personnel departments, for example.

1. Send a print job.
2. Enter the code on any device.
3. Start printing.



KONICA MINOLTA

OUR SOLUTIONS SPEAK FOR US SO DO OUR CUSTOMERS!

“The reduction and modernisation of our printer fleet has led to significant cost savings. We are now working with modern machines, connected solutions and services that guarantee safe and uninterrupted operation of the entire output infrastructure. Thanks to Konica Minolta’s support, my IT group has to do less maintenance work on office devices, and our colleagues working with the new machines benefit from new functions that make their everyday work easier.”

Peter Toth, Head of IT at ORFK DA GEI

“The cooperation with Konica Minolta was at a very high level. The company arranged a really smooth transition from the old fleet to a new one with printing devices from Konica Minolta. The required efficiency and reliability was fully reached. For us, Konica Minolta has become a reliable partner not only for a managed printing environment, but also as a provider of high-quality and efficient software solutions such as PageScope Enterprise Suite.”

Mr Vojta from AHOLD Czech Republic, a.s.

Your Konica Minolta Business Solutions Partner:

Konica Minolta
Business Solutions Europe GmbH
Europaallee 17
30855 Langenhagen  Germany
Tel.: +49 (0) 511 74 04-0
Fax: +49 (0) 511 74 10 50
www.konicaminolta.eu

High Performance

Speed and quality contribute to improved office performance

High-speed printing

Delivers high-speed printing at 38 PPM¹/33 PPM² in both colour and black-and-white modes (A4 portrait). Fast output even when printing a large number of copies.

1. C3851
2. C3351

Compact design

With its compact design (width: 555 mm; depth: 584 mm), the bizhub C3851 series can fit in small spaces like the backroom of a store, beside a desk in a SOHO environment, or in the corner of a partitioned work space in a large office. In addition, using a wireless kit³ makes it possible to connect to an office Wi-Fi network, further expanding the range of possible places for installation.

3. Upgrade Kit UK-216, the Local Interface Kit EK-P05 or Local Interface Kit EK-P06

1,650 sheets

Equipped with a 650-sheet large-capacity paper unit as standard. The use of optional paper units can increase the capacity to a total of 1,650 sheets⁴.

4. 80 g/m²

i-Option expands range of functions

Paper documents are scanned to PDF or OOXML. As the file format that is best suited to the operation or objective can be selected, i-Option expands the range of secondary uses for documents.

- The OCR feature makes it possible to conduct full-text searches
- Images and text can be re-used in Microsoft Office and other applications

File conversion formats and required options (i-Option)

	LK-102 v3	LK-105 v4	LK-110 v2
PDF/A (long-term archiving)	●		●
Web-optimised PDF (linearised PDF)	●		●
Encrypted PDF (digital ID)	●		●
Searchable PDF (OCR)		●	●
Compact, high-resolution PDF			● ^{*5}
OOXML file (extension: .docx/.xlsx/.pptx) conversion			●
OOXML file (extension: .docx/.xlsx/.pptx) conversion + OCR Max. Image Size		● ^{*6}	●

5. The pptx conversion function comes as standard, but LK-105 v4 or LK-110 v2 is required for the OCR function.
 6. Supports pptx files only.
- * To use the above options, the optional Upgrade Kit UK-211 is required.

C3851

38 COLOUR PPM | **38** BW PPM

C3351

33 COLOUR PPM | **33** BW PPM

Resolution

1,200 dpi

Maximum paper capacity

1,650* sheets
(80g/m²)

* When the two optional 500-sheet paper units are added.



Base unit

Base unit with copy desk

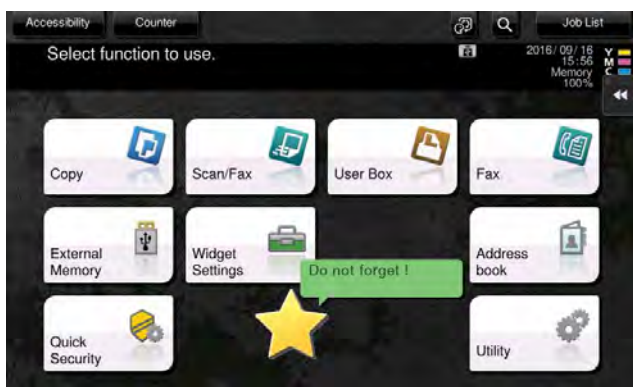
Base unit with additional paper trays and copy desk

Usability

Simple and intuitive, offering excellent usability for all users

Widget feature

Built-in widget function enables textboxes, icons, and GIF animation to be posted onto the operation panel. Use this function just like sticky notes to share such information as operating precautions, operating rules, and in-house messages.



Large 7-inch operation panel

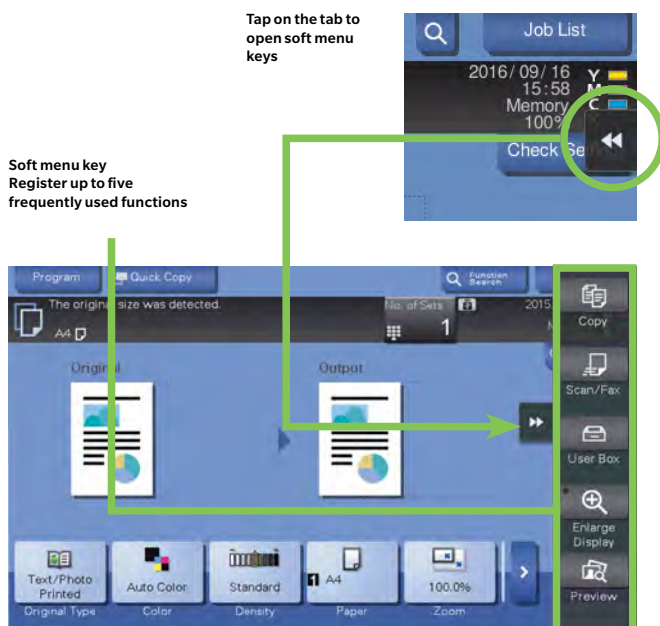
The operation panel's intuitive design allows users to operate with just the swipe of a finger. Has the same user interface as A3 multifunction printers and therefore is easy to use.



The soft numeric keypad has been revised to enable faster input.

Slide menu

In addition to the four hard registration keys, five soft menu keys are also available for one-touch activation of functions. Assign frequently used functions (e.g. copy, fax, open numeric keypad) to these keys for improved operability.



Connecting to NFC-enabled mobile devices

Android devices

The operation panel is equipped with the Mobile Touch Area, which is compatible with devices that support Near Field Communication (NFC). Pairing¹ is available from Android devices via PageScope Mobile. Print a file by selecting it in PageScope Mobile and holding the Android device over the Mobile Touch Area. Scan² documents to save data. If authentication is required, the user can log in by holding an Android device over the Mobile Touch Area.

1. Android devices must have Android OS 4.4 or higher.
2. A wireless LAN environment is required.

iOS devices (via Bluetooth LE)

Users can search for and register³ nearby bizhub units in PageScope Mobile⁴ via Bluetooth Low Energy (LE)⁵. If user authentication is required, log in using Bluetooth LE. Print³ or scan³ via wireless LAN by selecting a bizhub unit that is registered in PageScope Mobile.

3. A wireless LAN environment is required.
4. PageScope Mobile for iPhone/iPad Version 5.0 or higher is required.
4. The optional Local Kit EK-P06 is required.

Network

Diverse connectivity promotes efficient workflow

AirPrint

Apple's standard printing system compatible with iOS 4.2 and Mac OS 10.7 or later. A compatible printer on your wireless LAN can be used.

* Coming soon.



bizhub Remote Access

Installing bizhub Remote Access¹ to operate remotely from a mobile device as if using the bizhub unit's operation panel. Enable various settings (e.g. configure sleep mode settings, register abbreviated addresses, manage document files stored in boxes, and configure MFP settings) from a remote location in the office.

1. Download Android version from Google Play, and iOS version from the App Store (free of charge).
- * MFP operation panel cannot be used when bizhub Remote Access is in use.
- * The device used for remote operation must be connected to the same network as MFP.

Mopria Print Service

Wireless printing technology provided by Mopria Alliance. Allows you to print from devices installed with Android 4.4 or later.



Wireless LAN

With the simple AP (Access Point) mode² a single bizhub C3851 series unit can set up a local wireless LAN environment by itself, enabling external mobile devices to get a secure connection without the need for an internal LAN. For greater convenience, use PageScope Mobile³ to read the QR code displayed on the operation panel to establish a wireless connection between a mobile device and the bizhub unit.

2. The optional Upgrade Kit UK-216 and Local Connection Kit EK-P05 or EK-P06 are required.
3. PageScope Mobile for iPhone/iPad and Android

Google Cloud Print

With the compatible software installed, you can print from any location via the internet regardless OS or device types.

* Google Cloud Print Setup and Google account registration are required.



Konica Minolta Print Service

Print directly to bizhub via a wireless LAN from Android 4.4 or later installed devices.



PageScope Mobile for iPhone/iPad, Android and Windows

Using PageScope Mobile, an app offered by Konica Minolta, access a wide range of bizhub functions including double-sided printing, 2-in-1 printing, security printing, and staple/punch printing.

Print documents on a bizhub unit from mobile devices equipped with Windows 10 Mobile.



QR code display screen



* In simple AP (access point) mode, up to four devices can be connected simultaneously.

Security

High-level security to address risks in multiple ways

Various authentication capabilities

A built-in authentication system can be found on the operation panel, allowing the administrator to set restrictions on copying, scanning, faxing¹, printing, using external memory, and using Box functions for each user and department. It also supports user authentication² with contactless IC cards,³ biometric authentication² using the user's finger vein patterns, and authentication on NFC-enabled Android devices*

- 1. Optional Fax Kit FK-517 required.
- 2. Device Connection I/F Kit EK-P05 or EK-P06 required in addition to optional IC Card Authentication Unit AU-201S and Mounting Kit MK-P02.
- 3. Supports contactless IC cards include FeliCa (IDm), SSFC, FCF, FCF (campus), and MIFARE (UID).
- 4. Android device that runs Android OS 4.4 or higher and supports Host Card Emulation (HCE), and PageScope Mobile for Android Version 4.1 or higher are required.



Secure printing

When printing, set up a password on the printer driver screen to store print data in the bizhub unit's hard disk. It will not print unless authenticated by entering the same password on the operation panel. A useful function for printing confidential documents or for restricting receivers of the document.

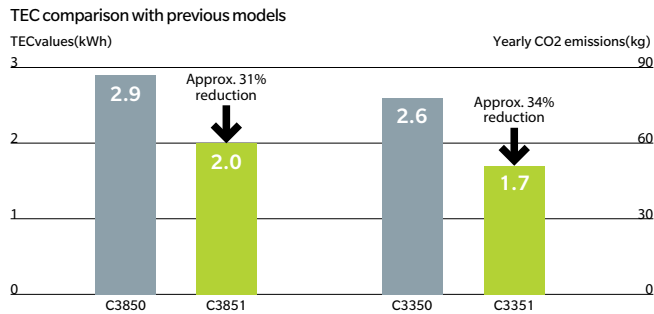


Ecology

An energy-efficient, resource-saving design

TEC values

With its energy-efficient design, the bizhub C3851 series easily clears the standard energy consumption (TEC) values defined in International Energy Star Program Version 2.0. Compared with previous models, its TEC has decreased by approximately 31%-34%, while its CO2 emissions have also dropped.



* Values for 220-230 V

* TEC values applied to the International Energy Star Program Version 2.0

Annual CO2 emissions = TEC value x 52 weeks x emission factor

(From the November, 2011 press release by Japan's Ministry of the Environment.)

Power consumption

We have improved bizhub units' power-saving logic (e.g. turning off MFP's CPU during sleep mode) and successfully cut power usage during sleep mode to 0.5 W, contributing to reducing the environmental impact and the total cost of ownership (TCO).

Global environmental standards

We address global environmental issues by ensuring our products' compliance with the requirements of the International Energy Star Program, which aims to develop and introduce energy-efficient office appliances. Our products also comply with the environmental standards adopted by countries with high environmental awareness. We are committed to work from a broad range of perspectives to reduce our environmental impact.

Usage of recycled materials

To reduce our environmental burden, we use recycled PC/PET which we developed with our proprietary cutting-edge chemical processing technology. Of the surface area of the bizhub C3851 series, 47.7% is made using recycled PC/PET. The registration keys in the operation panel are made with recycled bio-plastic materials.

